

NO MORE RISK

LOMBRICO 500/600 SINGLE-TRACKED



500

*The images and technical data refer to machine already in production.
The R&D Department is at disposal to customize the products according to the most various needs.*



LOMBRICO 500 TECHNICAL DATA


STANDARD SUCTION HOSE

Ø 150 mm	Ø 6"
-----------------	-------------

MANHOLE

Ø 500 mm	Ø 20"
-----------------	--------------

DIMENSIONS

L	1600 mm	L	63"
H	480 mm	H	19"
W	270 mm	W	11"
	210 Kg		436 lb

Gerotto Single-Track Lombrico Mini Excavator is especially designed and developed for reclaiming works in small ducts and sewer pipes. It has lateral stabilizer wheels, very suitable for the Removal of the material from obstructed sewers pipes, and for Ducts Inspection Activities. It ensures the Safety of the Operations, as the operator commands the machine from a safe position, the Profitability of the Investment, as with the use of this equipment the job is done faster and without any manpower involved, the Efficiency of the Service, with the precise operations carried out with accurate and articulated movements, and the Environmental Sustainability.

OPTIONAL



Camera System Available



ADVANTAGES

- Safe operations
- Time saving
- No plant stoppage
- Reduction of labour



600

LOMBRICO 600 TECHNICAL DATA

STANDARD SUCTION HOSE

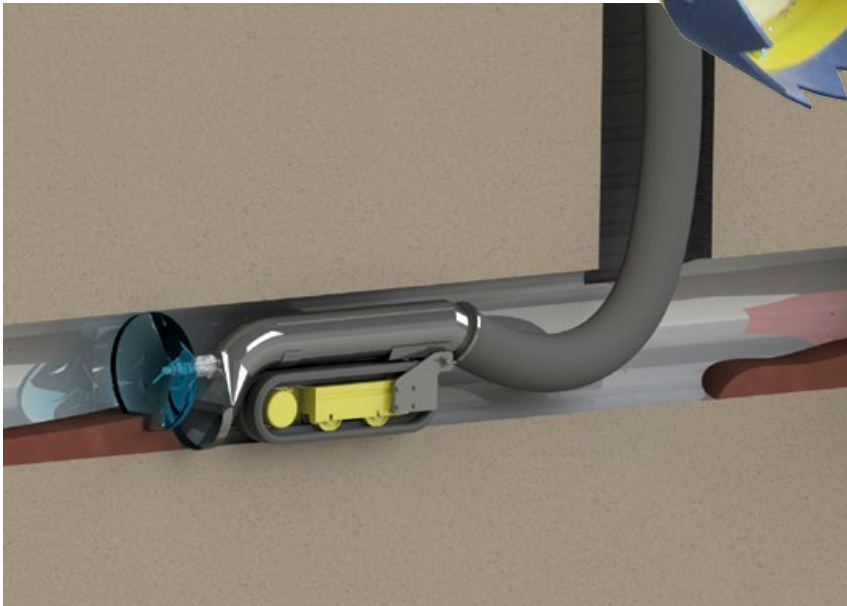
Ø 200 mm	Ø 8"
----------	------

MANHOLE

Ø 600 mm	Ø 24"
----------	-------

DIMENSIONS

L	1450 mm	L	57"
H	550 mm	H	22"
W	300 mm	W	12"
kg	180 Kg	kg	397 lb



SUITABLE TO WORK WITH

- Recycling Vacuum Trucks
- Vacuum Trucks
- Suction Excavators
- Industrial Aspirators
- Dust Aspirators

APPLICATION FIELDS

Ideal for the cleaning of:

- **IN SERVICE SEWER PIPES**

