

# FTC-NME

## FUEL TANK CLEANING NO MAN ENTRY

FTC-NME "Fuel Tank Cleaning – No Man Entry" is an ATEX Zone 0 Certified System created for the Underground Fuel Tanks Cleaning with three main functions: chemical product spraying, high pressure washing and sludge removal.

FTC-NME ROV is composed of a stainless steel structure equipped with tracks made of dissipative material, and a telescopic arm equipped with high-pressure water nozzles for the cleaning of the surface of the underground tanks.

The results of the cleaning operation are then removed through the suction intake of the machine.



### SUITABLE TO WORK WITH

- Vacuum Trucks
- Suction Excavators
- Industrial Aspirators
- Dust Aspirators



The images and technical data refer to machine already in production.  
The R&D Department is at disposal to customize the products according to the most various needs.



OPTIONAL

ATEX Camera System Available



### ADVANTAGES

- No Man Entry Operations in high explosion and gas-presence risk areas
- Accurate and precise interventions
- Costs reductions
- Environmental sustainability

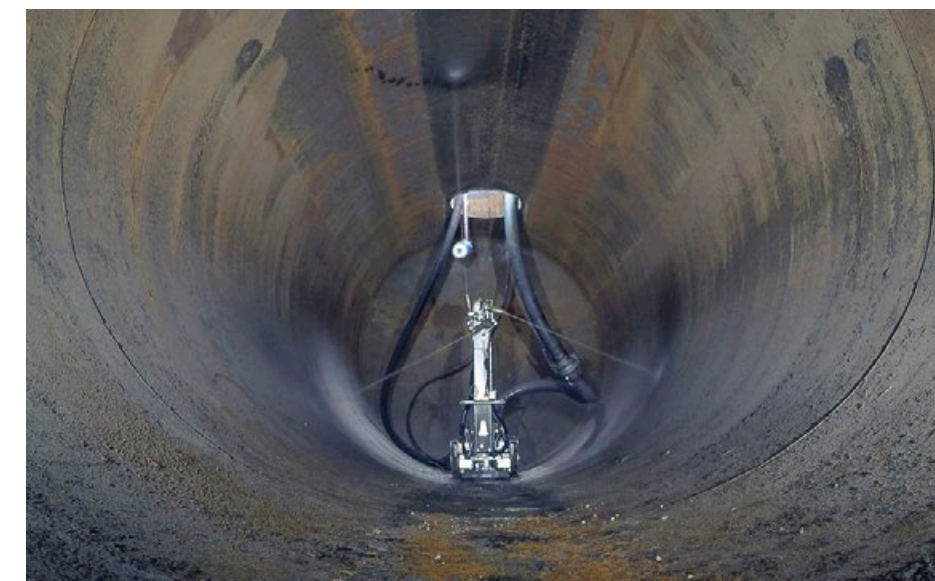
### TECHNICAL DATA

MANHOLE

|          |       |
|----------|-------|
| Ø 450 mm | Ø 18" |
|----------|-------|

DIMENSIONS

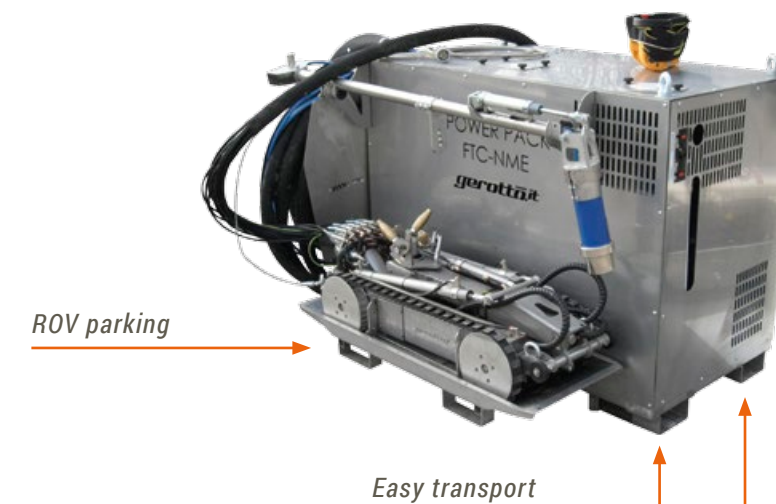
|           |        |
|-----------|--------|
| L 1000 mm | L 40"  |
| H 350 mm  | H 14"  |
| W 350 mm  | W 14"  |
| 80 Kg     | 176 lb |



### CONTROL UNIT

DIMENSIONS

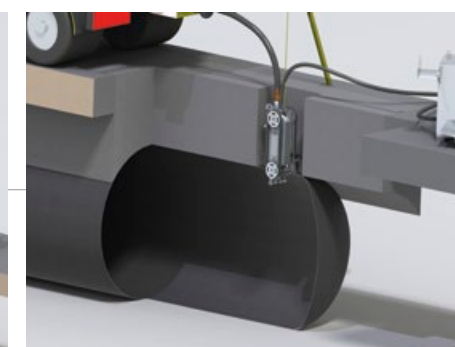
|           |        |
|-----------|--------|
| L 1300 mm | L 51"  |
| H 930 mm  | H 37"  |
| W 1100 mm | W 43"  |
| 400 Kg    | 882 lb |



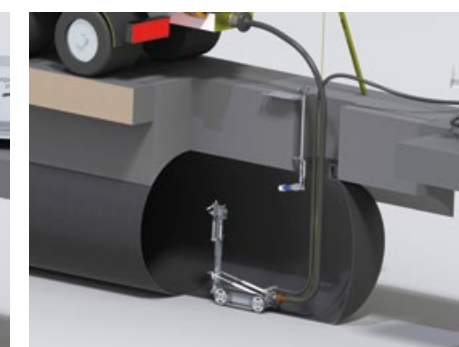
### WORK PHASES



1. FTC-NME connection to Suction Excavator or Vacuum Truck.



2. FTC-NME introduction in the tank through the manhole.



3. Tank washing and sludge aspiration.