

BRUCO RC MINI EXCAVATOR

Bruco RC is a totally radio controlled mini excavator very suitable for under pipes cleaning and under conveyors material removal. Bruco RC shows its best skills in combination with suction excavator. It directly conveys material to Suction Excavator or to any other Vacuum Truck or Industrial Aspirator hose (up to 250 mm).



DIMENSIONS & FEATURES

Length 2.330 [mm]

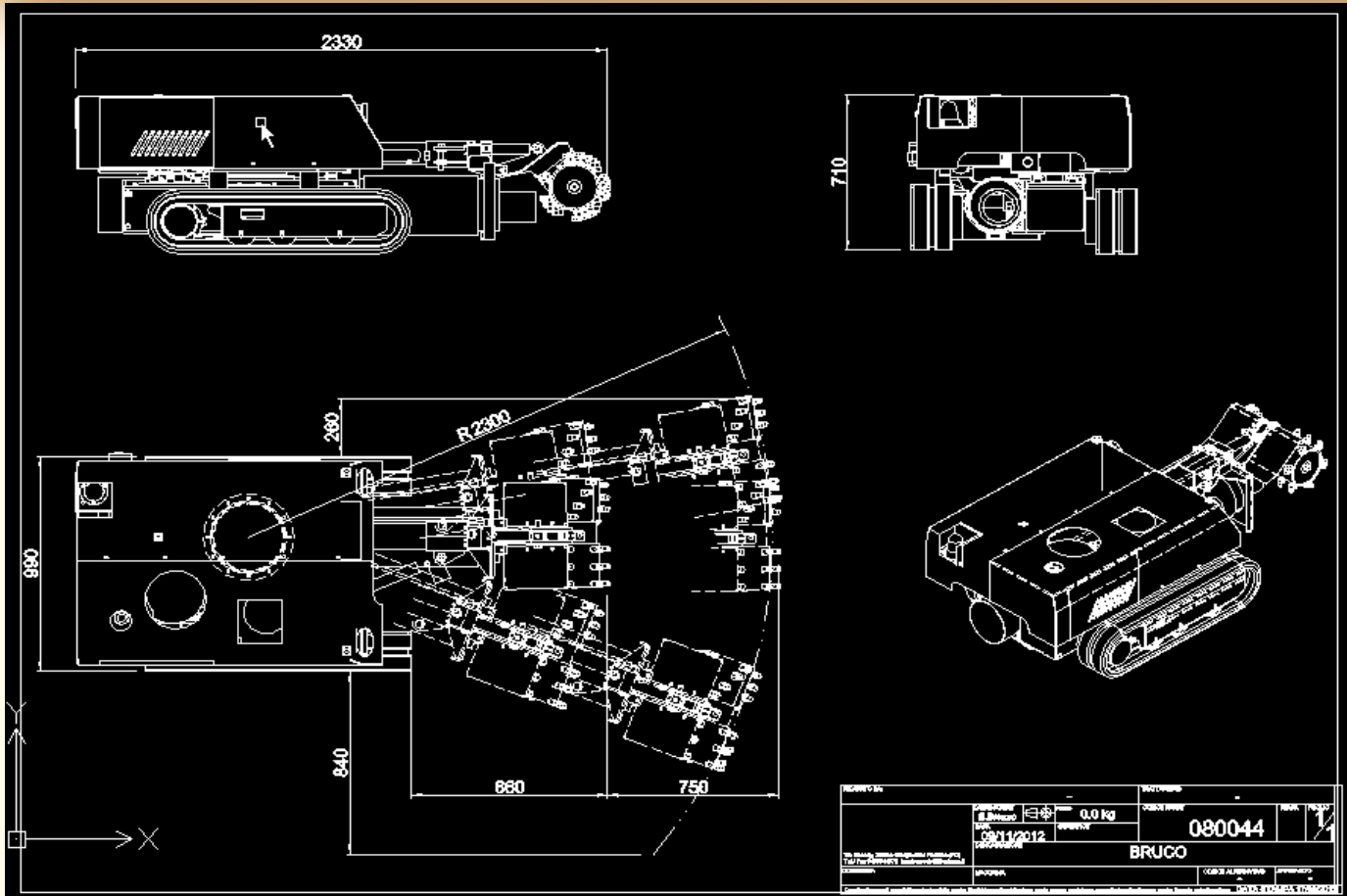
Height 710 [mm]

Width 990 [mm]

Total weight 900 [Kg]



BRUCO RC MINI EXCAVATOR



ARM FEATURES

- Extension 750 [mm]
- Operative angle +/- 20°
- Cutting head width 450 [mm]



BRUCO RC MINI EXCAVATOR



ENGINE FEATURES

Single-cylinder diesel engine

Potenza 10 HP



RADIO CONTROL FEATURES

- Biaxial joystick with proportional commands
- Speed selection
- Engine switch on/off command
- Emergency light and led command

